

93°18'W

93°17'W

39°19'N



Notes

Carroll County

Saline County

Waverly Gage = 11.7 at time of collection 18 November 2020

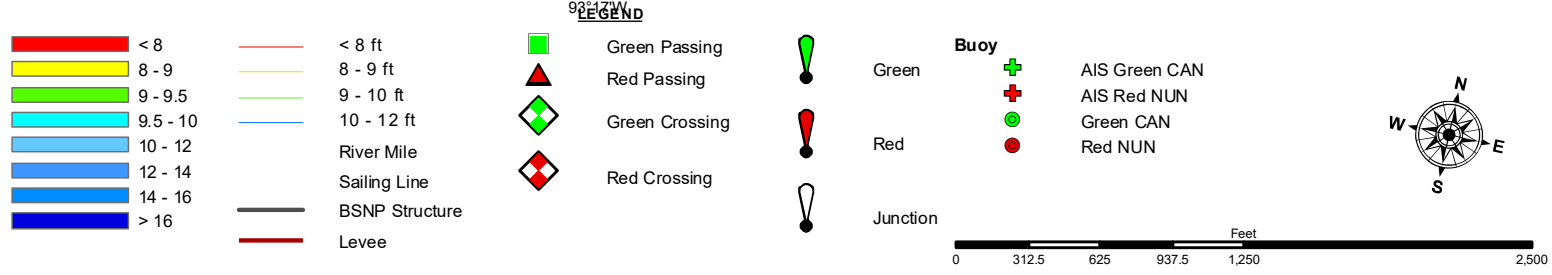
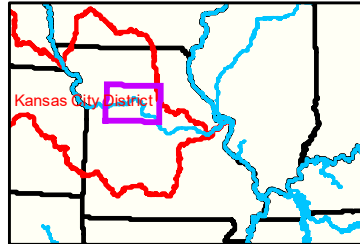
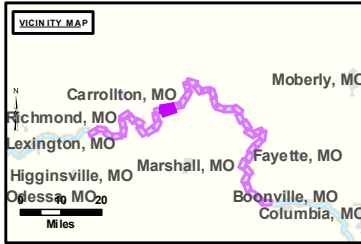
Gage\_L

39°18'N

39°19'N

93°18'W

93°16'W



**NOTES:**  
 Horizontal Coordinate System:  
 World Geodetic System of 1984 (WGS84), projected to the  
 Universal Transverse Mercator (UTM) Zone 15 North.  
 Distance units in U.S. Survey Feet

Vertical Datum:  
 Soundings are shown in feet and indicated depths  
 are referenced to water surface at time of collection.

The information depicted on this map represents the results of a survey  
 conducted on the date indicated and can only be considered  
 to represent the general condition existing at that time.

The location of navigation aids are based on and provided by  
 the U.S. Coast Guard.



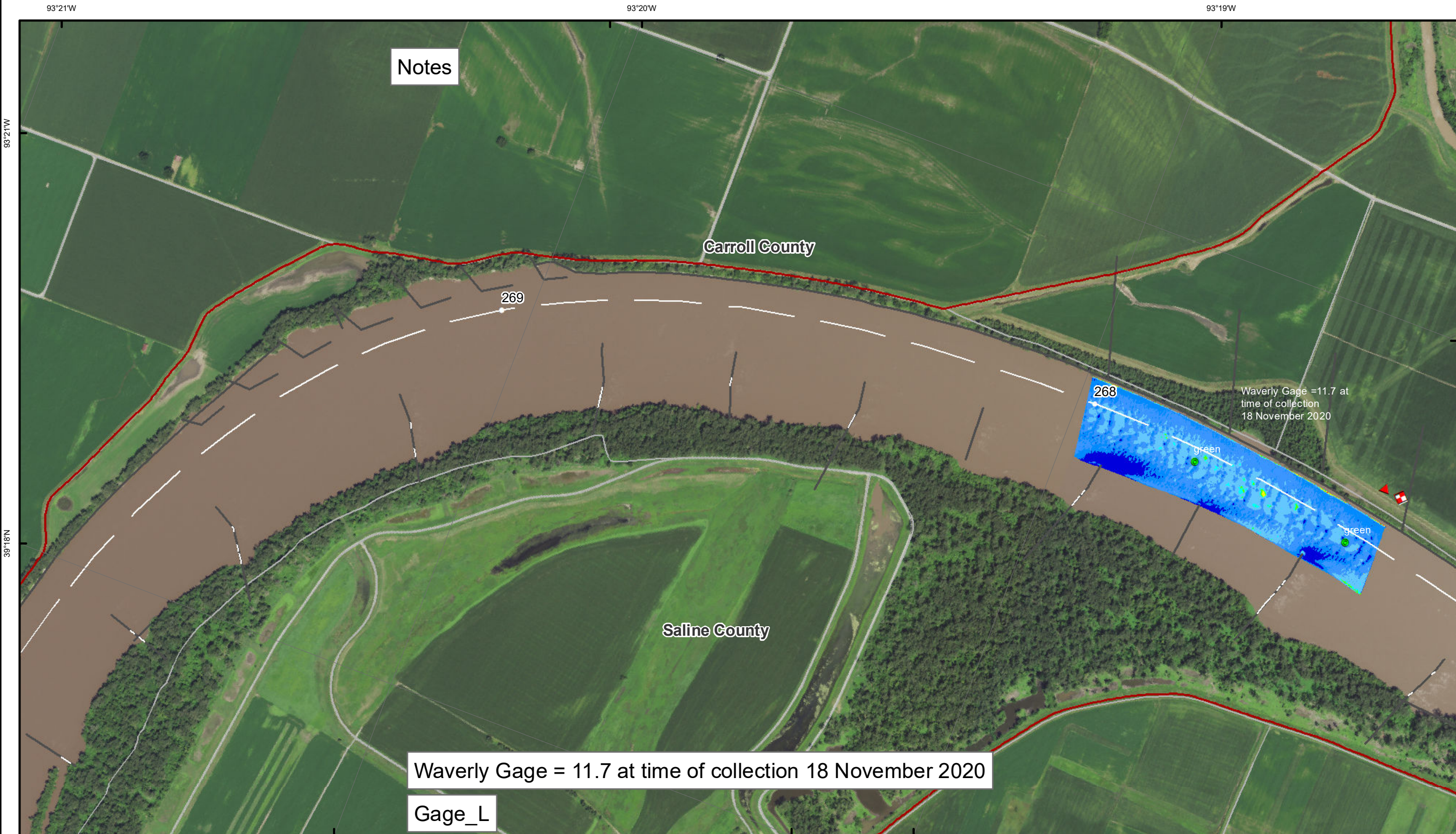
**DISCLAIMER:** The U.S. Army Corps of Engineers (USACE) provides this information as a service to the public. It is not intended to be used for any purpose other than that for which it was intended. The USACE makes no warranty, express or implied, regarding the accuracy, reliability, or completeness of the information provided. The USACE is not responsible for any errors or omissions in this information. The USACE is not liable for any damages, including consequential damages, arising from the use of this information. The USACE is not responsible for any actions taken based on this information. The USACE is not responsible for any actions taken based on this information.

KANSAS CITY DISTRICT MISSOURI RIVER AREA OFFICE	
Submitted By:	MRAO
Reviewed By:	MRAO
Checked By:	MRAO
Approved:	

**Survey Information**  
 MO\_03\_LMR  
 MO\_03\_LMR\_20201118\_CS\_267\_5\_268\_0\_SORT  
 18 November 2020

**Sheet Number**  
 28 of 42

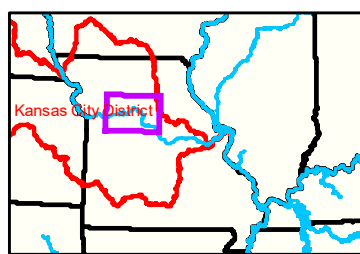
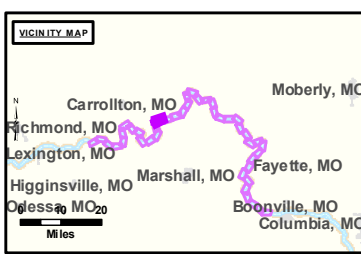




Notes

Waverly Gage = 11.7 at time of collection 18 November 2020

Gage\_L



**LEGEND**

< 8	< 8 ft	Green Passing	Green	AIS Green CAN
8 - 9	8 - 9 ft	Red Passing	Red	AIS Red NUN
9 - 9.5	9 - 10 ft	Green Crossing	Green CAN	Red NUN
9.5 - 10	10 - 12 ft	Red Crossing	Junction	
10 - 12	River Mile			
12 - 14	Sailing Line			
14 - 16	BSNP Structure			
> 16	Levee			

**Buoy**

0 312.5 625 937.5 1,250 2,500 Feet

**NOTES:**  
Horizontal Coordinate System: World Geodetic System of 1984 (WGS84), projected to the Universal Transverse Mercator (UTM) Zone 15 North. Distance units in U.S. Survey Feet.  
Vertical Datum: Soundings are shown in feet and indicated depths are referenced to water surface at time of collection.  
The information depicted on this map represents the results of a survey conducted on the date indicated and can only be considered to represent the general condition existing at that time.  
The location of navigation aids are based on and provided by the U.S. Coast Guard.



**DISCLAIMER:** The U.S. Army Corps of Engineers provides this information for informational purposes only. It is not intended for use in any legal proceeding or as a basis for any claim. The Corps makes no warranty, express or implied, regarding the accuracy, completeness, or timeliness of the information. The user assumes all liability for any use of this information. The U.S. Army Corps of Engineers is not responsible for any errors or omissions in this information. The U.S. Army Corps of Engineers is not liable for any damages, including consequential damages, arising from the use of this information. The U.S. Army Corps of Engineers is not responsible for any loss of data or information. The U.S. Army Corps of Engineers is not responsible for any loss of profit or business. The U.S. Army Corps of Engineers is not responsible for any loss of income or revenue. The U.S. Army Corps of Engineers is not responsible for any loss of reputation or goodwill. The U.S. Army Corps of Engineers is not responsible for any loss of opportunity. The U.S. Army Corps of Engineers is not responsible for any loss of time. The U.S. Army Corps of Engineers is not responsible for any loss of sleep. The U.S. Army Corps of Engineers is not responsible for any loss of peace of mind. The U.S. Army Corps of Engineers is not responsible for any loss of enjoyment of life. The U.S. Army Corps of Engineers is not responsible for any loss of health. The U.S. Army Corps of Engineers is not responsible for any loss of life.

KANSAS CITY DISTRICT MISSOURI RIVER AREA OFFICE	
Submitted By:	MRAO
Reviewed By:	MRAO
Checked By:	MRAO

**Survey Information**

MO\_03\_LMR  
MO\_03\_LMR\_20201118\_CS\_267\_5\_268\_0\_SORT  
18 November 2020

**Sheet Number**  
29 of 42